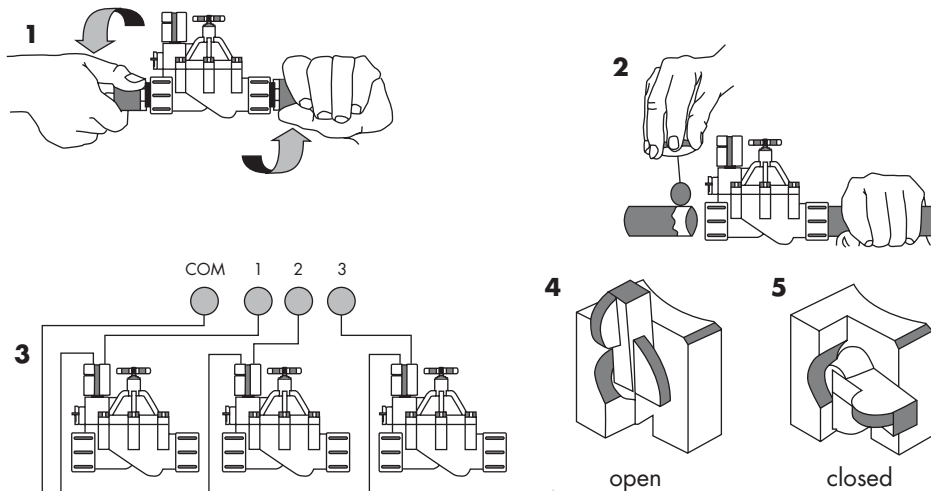


## DFV Installation & Operating Instructions

**Very Important:** Please make sure to flush the supply lines completely before installing valves. Failure to do so could cause serious damage to the valve.

1. For threaded models (DFV-75 & DFV-100), wrap male adapters with two wraps of Teflon tape and thread the adapters into the valve inlet and outlet one turn past hand tight. **Warning:** Over tightening is unnecessary and may cause damage to the valve. The solenoid must be on the downstream side of the valve connection.
2. For slip model (DFV-100-SS) apply a thin coating of solvent weld to the outside of the supply line and the valve inlet. Twist the valve fully onto the supply line to evenly spread the solvent. Repeat these steps for the outlet connection. The solenoid must be on the downstream side of the valve connection.
3. Using watertight connectors, connect the individual station wire and valve common to the solenoid leads. Failure to use watertight connectors will severely shorten the life of the solenoid and will invalidate the warranty.
4. Flush the lateral sprinkler lines by opening the internal manual bleed lever on the downstream side of the valve just below the solenoid, we have conveniently labeled the On/Off positions. Make sure the valve flow control stem is fully open (counterclockwise/left turning), which we have also marked +/-.
5. Close the internal bleed after flushing out the system.



### DFV Troubleshooting Information

#### Valve will not open manually

- Check water supply and any possible master/shut-off/backflow valves to insure they are open.
- Ensure the valve is installed with the Irrigation Direct Logo arrows pointing downstream. The solenoid should be on the downstream side.
- Ensure the flow control stem is fully open (counterclockwise/left turn).
- Turn off the water supply. Remove the solenoid and check for debris blocking the exhaust port.
- Turn off the water supply. Remove the valve cover. Inspect the diaphragm for damage and replace if necessary. See parts breakdown on reverse side.

#### Valve will not open electrically

- Check voltage at controller for 24 VAC to station.
- Check voltage at the solenoid for at least 21 VAC minimum 24 VAC is optimal.
- Check to make sure you have a good connection with your wire connectors.
- If the valve still does not operate electrically then replace the solenoid with Irrigation Direct part # 300-400 or any industry standard  $\frac{3}{4}$ "-20 threaded solenoid. Our solenoid will be your most cost-effective replacement.

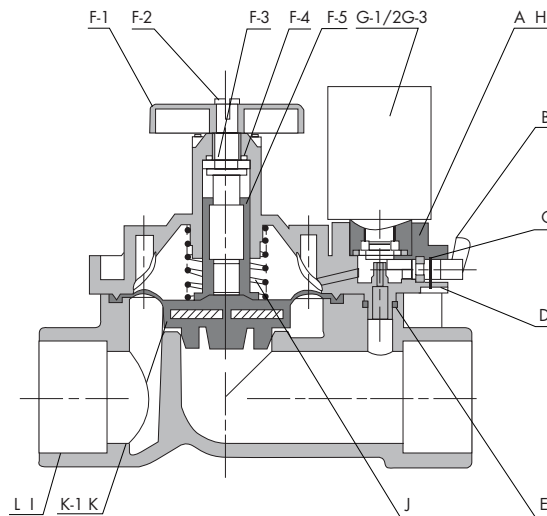
### Valve will not close

- Make sure the manual bleed lever is in the closed position.
- Check for leaks around the flow control, solenoid or between the valve cover and body.
- Turn off the water supply. Remove the solenoid and check for debris or damage to the exhaust port.
- Turn off the water supply. Remove the valve cover and inspect for debris under diaphragm or damage to the seat areas. If diaphragm is damaged please replace with Irrigation Direct part # 300-020.

### Slow leak through sprinklers

- Make sure the solenoid is properly installed and is not leaking. If it is leaking the o-ring is probably missing or the solenoid is not screwed in all of the way.
- Turn off water supply. Remove the valve cover and check for dirt, debris or gravel embedded in the diaphragm seat area.

### DFV Parts Breakdown



Item #	Part #	Description	For Model #'s
A	300-001	Valve Cover	All DFV
B	300-002	Manual Bleed Lever	All DFV
C	568-006	O-Ring - Manual Bleed Lever	All DFV
D	300-003	Metal Retainer - Bleed Lever	All DFV
E	568-010	O-Ring - Exhaust Port	All DFV
F-1	300-004	Cross Handle	All DFV
F-2	300-005	Flow Stem - Threaded	All DFV
F-3	300-006	Hex Nut O-Ring Retainer	All DFV
F-4	568-011	O-Ring - Flow Stem	All DFV
F-5	300-007	Non-rising Mechanism Flow Stem	All DFV
G-1	300-400	Solenoid Assembly	All DFV
G-3	568-015	O-Ring - Solenoid	All DFV
H	300-017	Cover Bolt (4) - 1/4-20 3/4" Hex HD	All DFV
I	300-018	Brass Inserts (4) - For Cover Bolts	All DFV
J	300-019	Diaphragm Spring	All DFV
K	300-020	Diaphragm	All DFV
L	300-021	Valve Body - 3/4" FNPT	DFV-75
L	300-022	Valve Body - 1" FNPT	DFV-100-T
L	300-023	Valve Body - 1" Slip x Slip	DFV-100-SS